



Install the Exemplify App on Windows 10

Install the Exemplify App on Windows 10

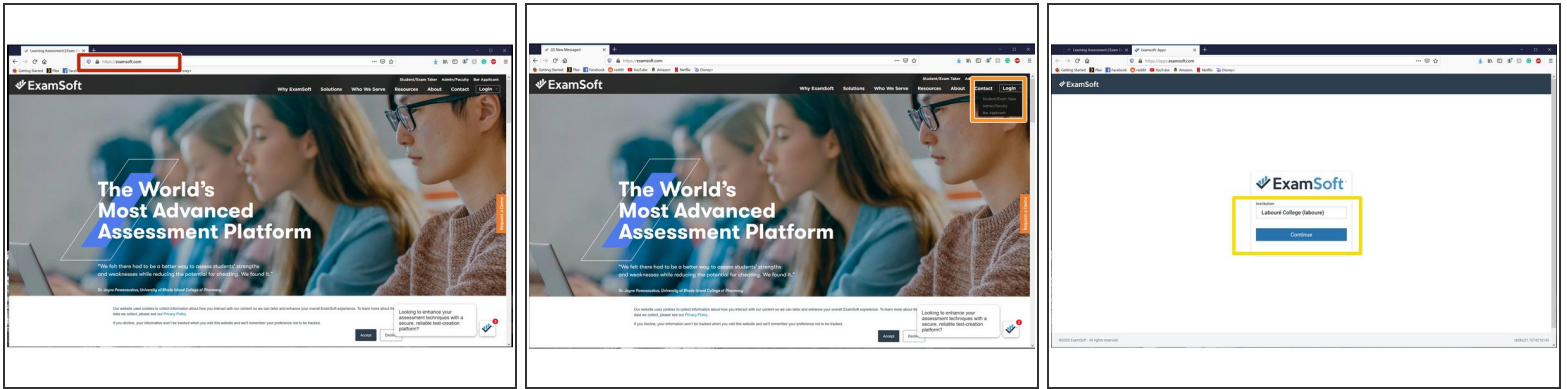
Written By: Wayne Peterson

Install
Exemplify
on Windows

INTRODUCTION

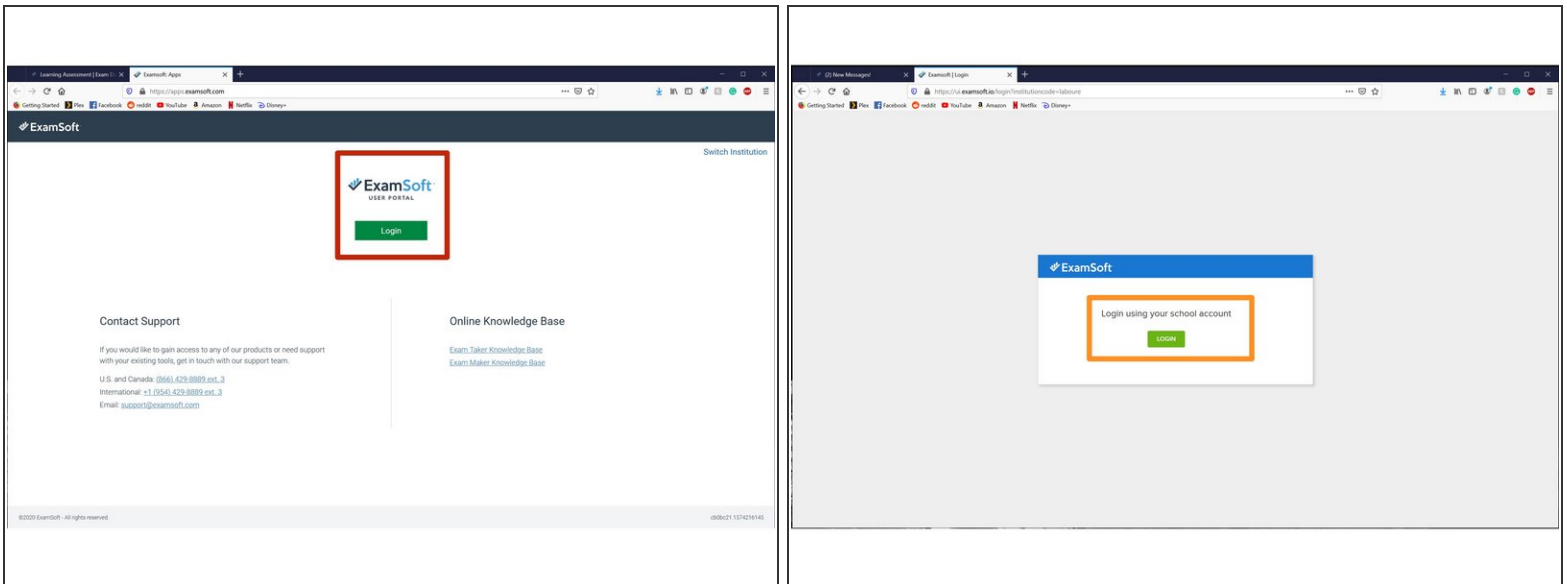
Please first ensure that your Windows device meets [Exemplify's minimum system requirements](#).

Step 1 — Install the Exemplify App on Windows 10



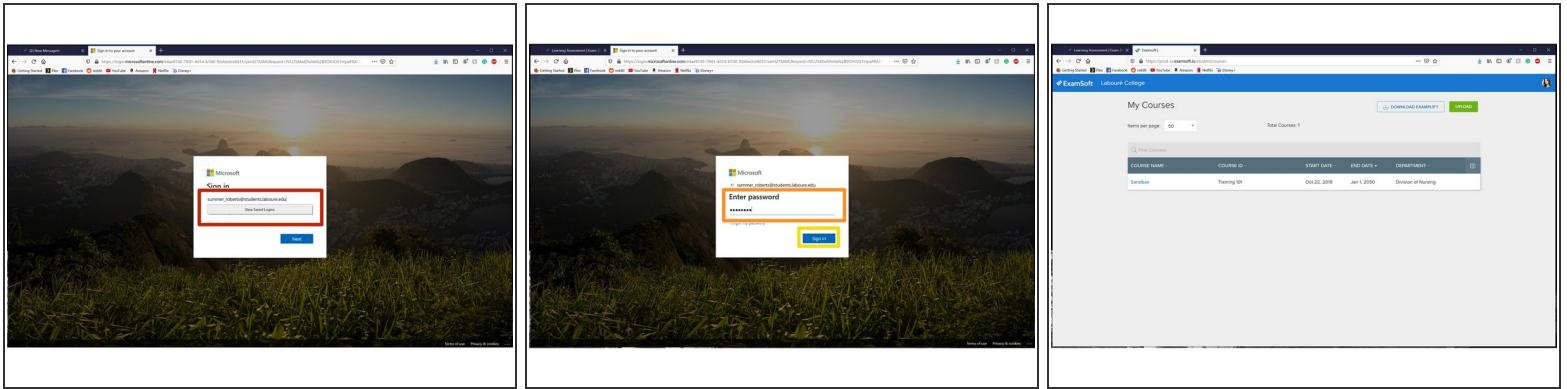
- In your web browser of choice, navigate to <http://Examsoft.com>
- Click on **Login** and select **Student/Exam Taker**
- Type *Labouré College* in the **Institution ID** field and click **Continue**

Step 2



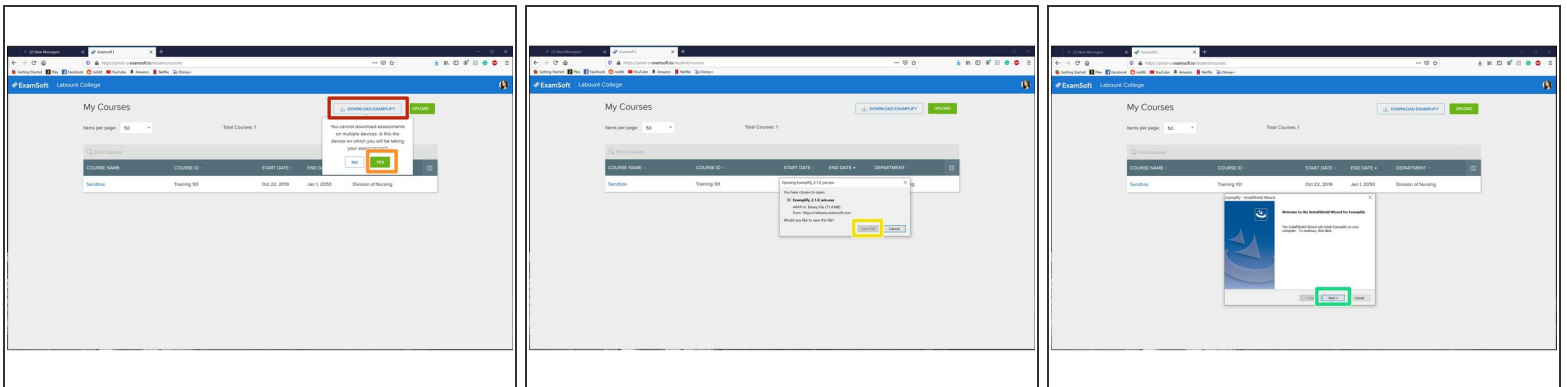
- Click **Login**
- Click **Login**

Step 3



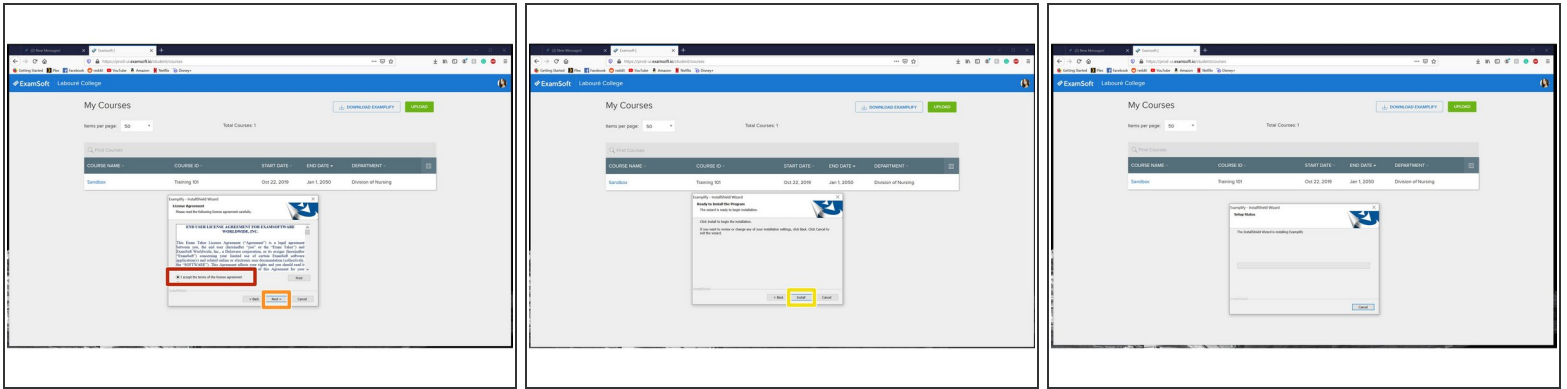
- Enter your full Labouré email address For example: Summer_Roberts@students.laboure.edu
- Enter your email password
- Click **Sign In**
- You will then be greeted by your enrolled courses.

Step 4



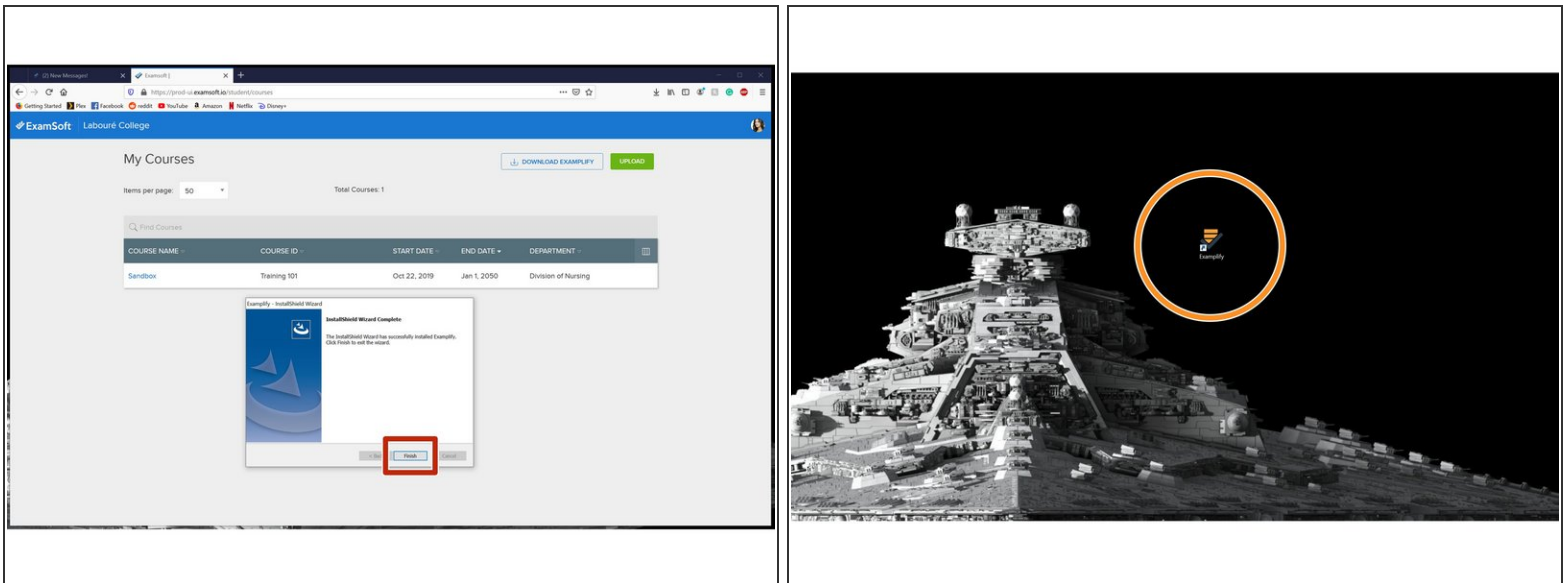
- Click on **Download Exemplify**
- Click **Yes**
- Click **Save File**
- Once downloaded, launch the installer from your **Downloads folder** and click **Next**

Step 5



- Read and agree to the terms and conditions
- Click **Next**
- Click **Install**
- The installer only takes a few moments to complete

Step 6



- When the installer prompts you, click **Finish**
- The Exemplify icon can now be found on your desktop