

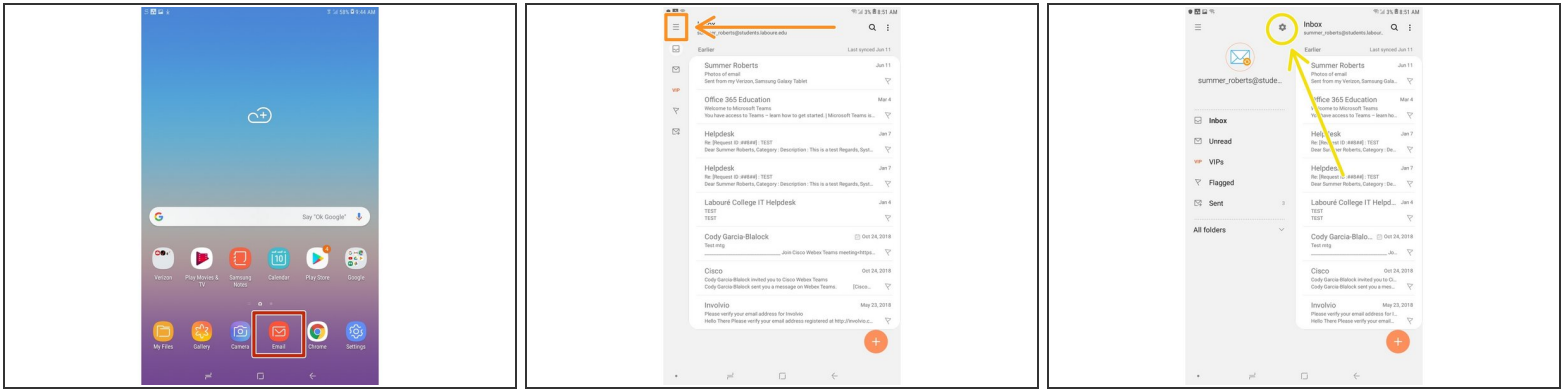


# Android- Add Student Email Accounts

Written By: Wayne Peterson

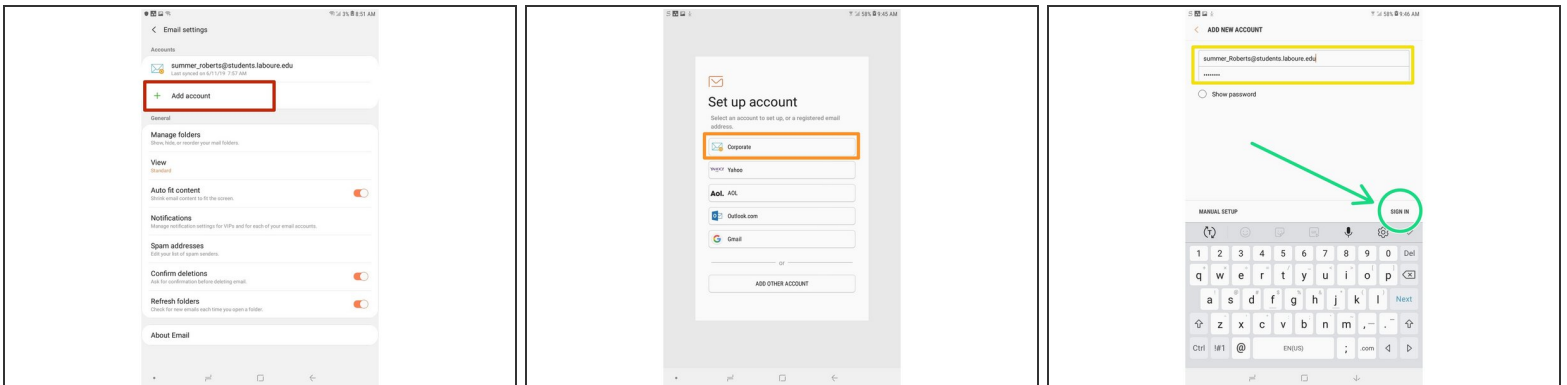
# Email on Android

## Step 1 — Android- Add Student Email Accounts



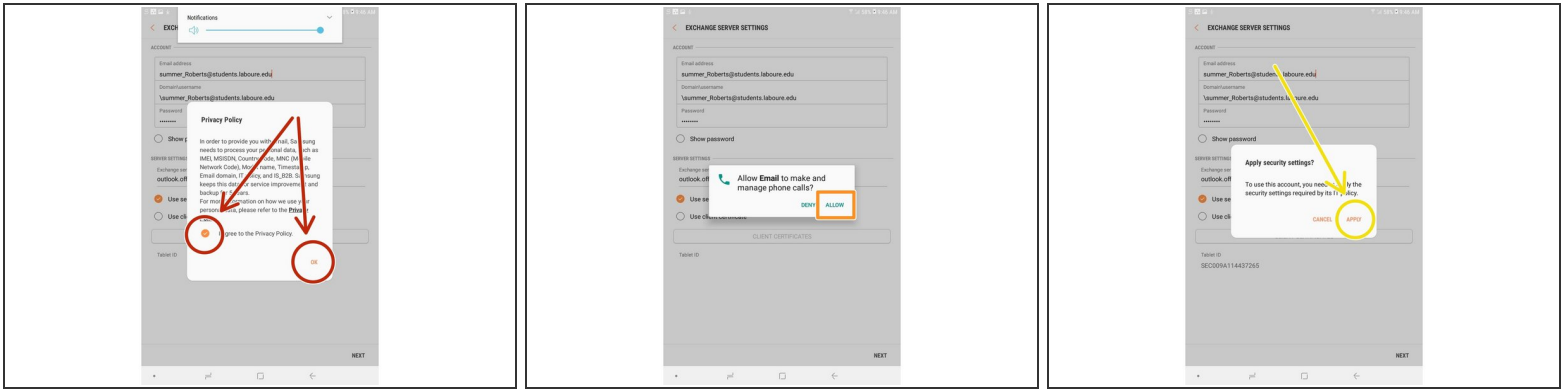
- Tap to open the **Email** app on your phone or tablet.
- Tap the 3 parallel lines in the top-left of your screen to open the menu.
- Tap the cog wheel to open **Settings**.

## Step 2



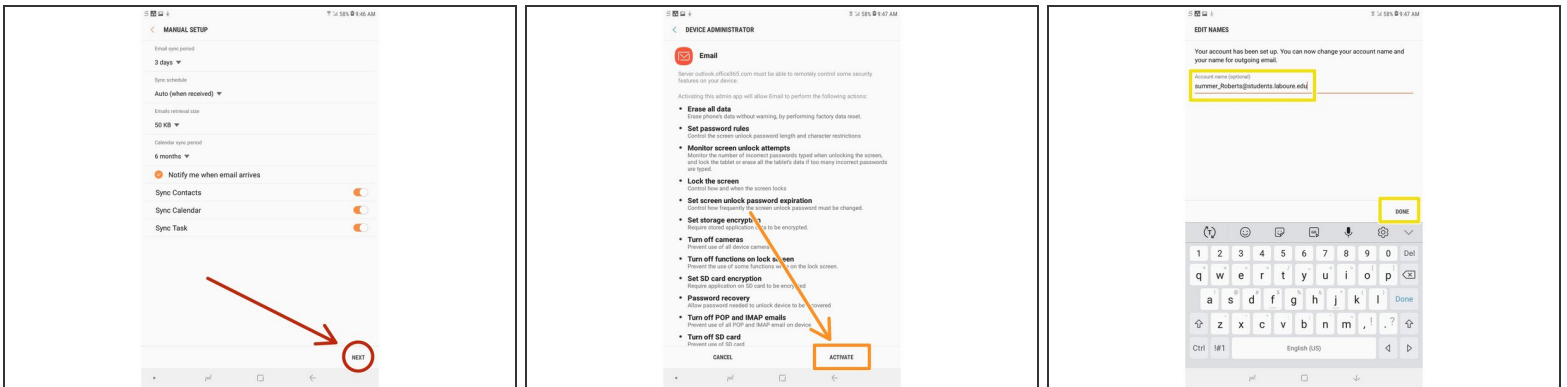
- Select **Add Account**
- Select **Corporate**
- Enter your full email address and password
- Tap **Sign In**

## Step 3



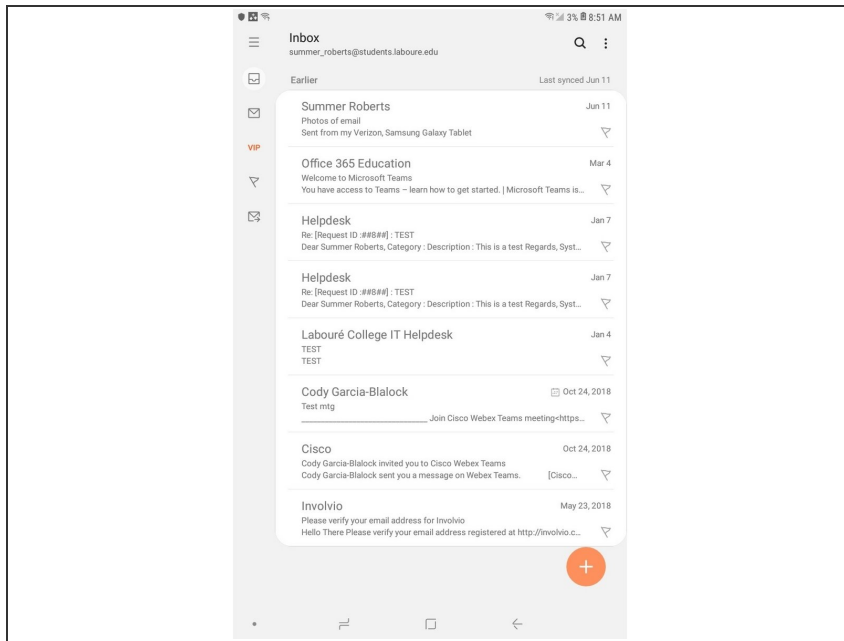
- Tap if you **agree to the Privacy Policy** and then tap **OK**
- Tap **Allow**
- Tap **Apply**

## Step 4



- Adjust your Sync Settings and tap **Next**
- Tap **Activate**
- Give the account a nickname and click **Done**

## Step 5



- Once the previous steps are completed you will be greeted by your Labouré mailbox.