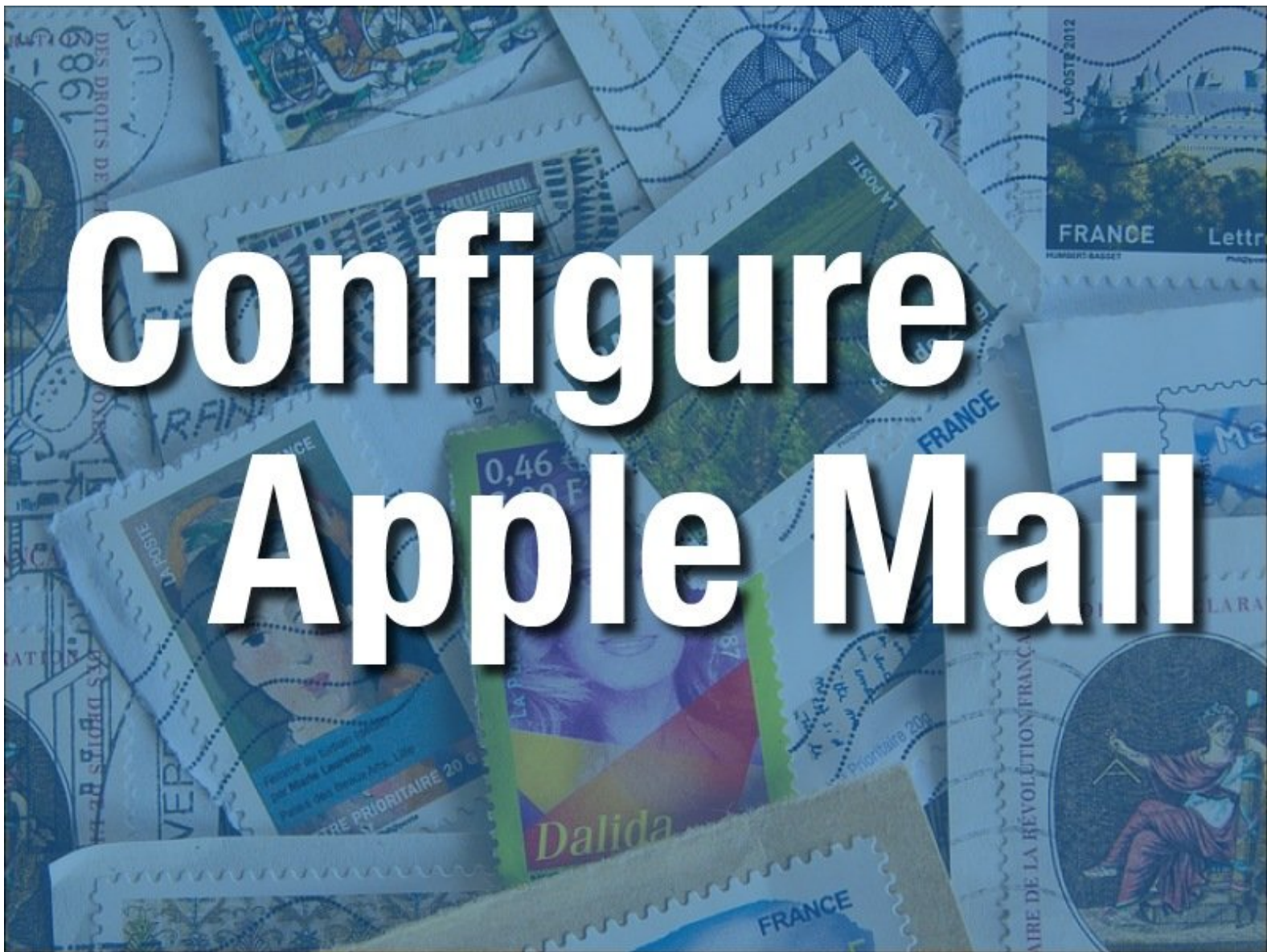




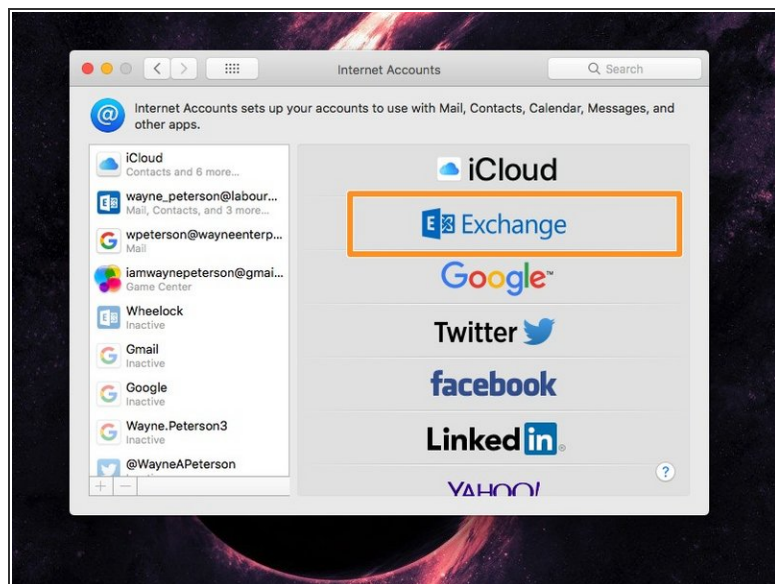
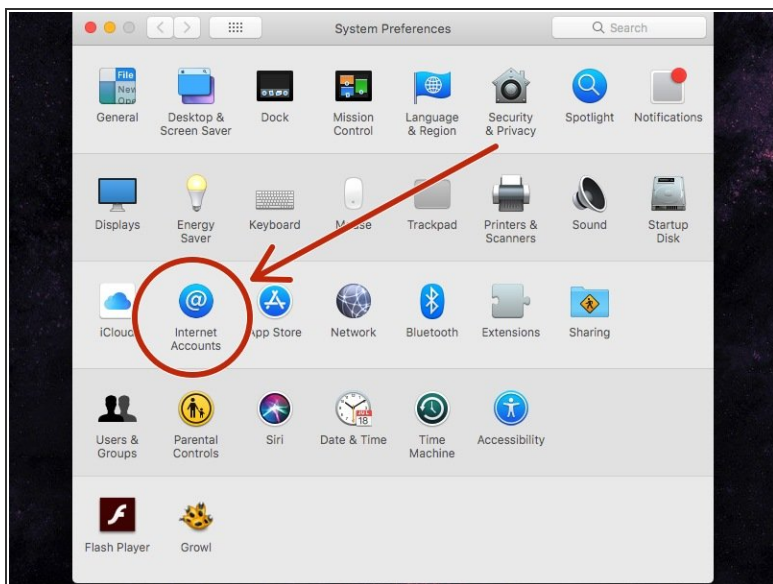
Configure Apple Mail

This guide will show the reader how to configure Apple Mail using their Office 365 account.

Written By: Wayne Peterson

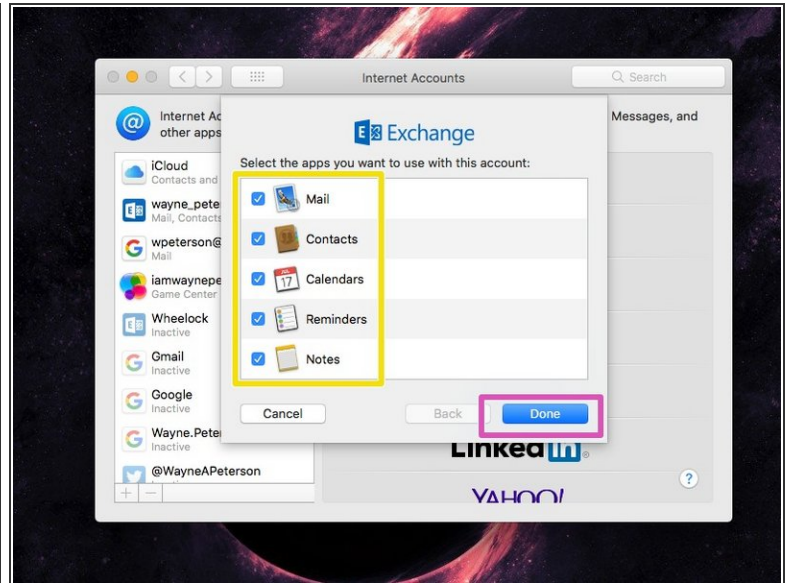
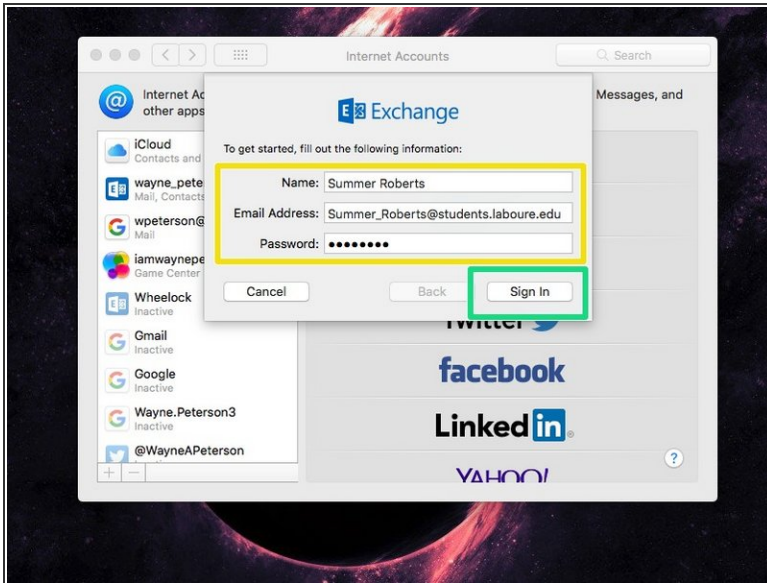


Step 1 — Configure Apple Mail



- In **System Preferences**, select **Internet Accounts**.
- Select **Exchange**.

Step 2



- Enter the requested login information.
- Select **Sign In**.
- Mark the checkbox for each service you want to sync to your Mac.
- Click **Done**.
- Your Labouré account is now added to the accounts synced to your Mac. You will be able to retrieve your Labouré email through the Apple Mail app.