



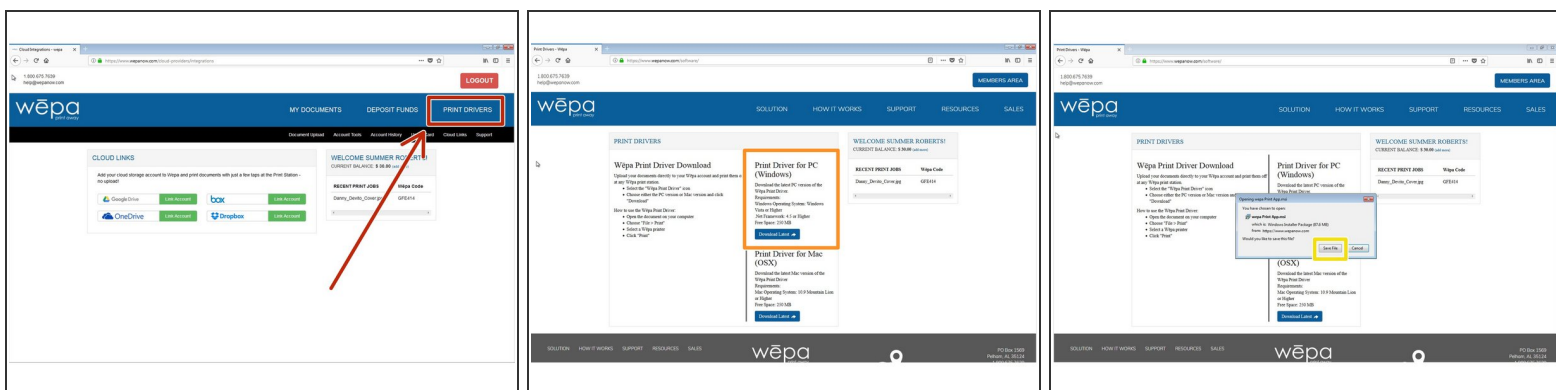
Install wēpa on Windows

This guide will teach students to install the wēpa print driver on their personal Windows computer.

Written By: Wayne Peterson

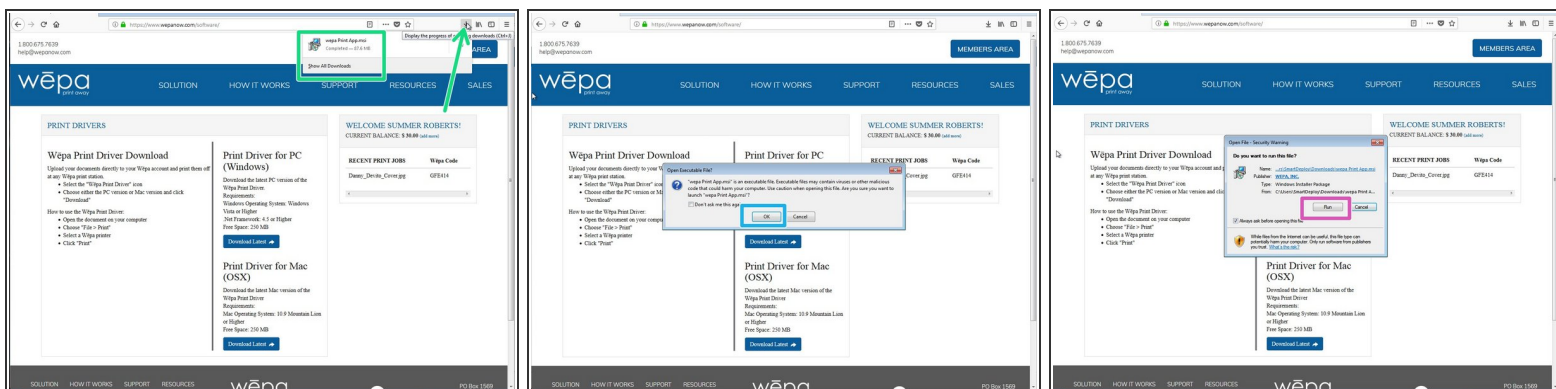
Install wēpa
on Windows

Step 1 — Downloading the Installer



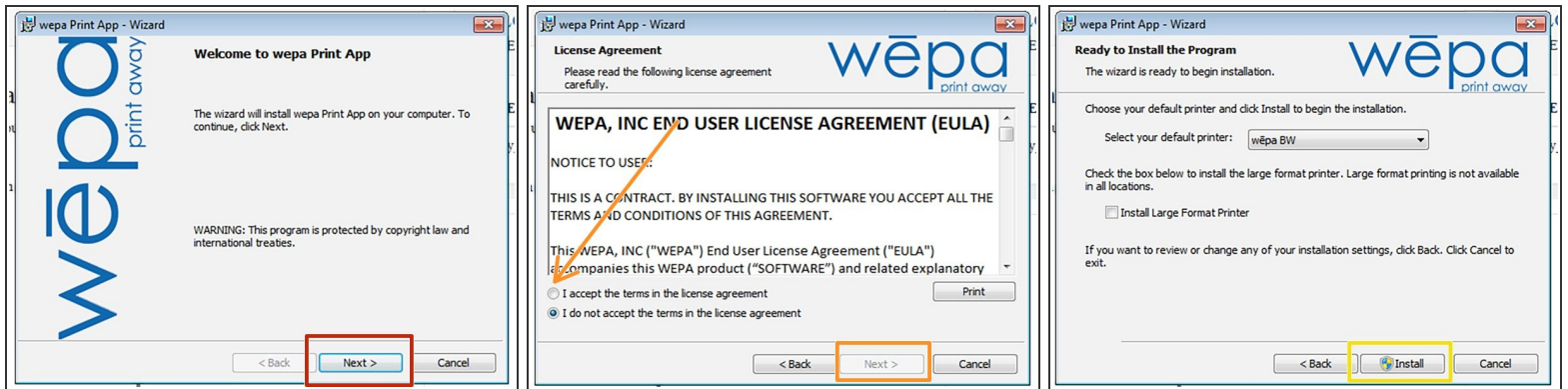
- Log into wēpa web and click on the **Print Drivers** link in the top-right.
- Locate the Mac installer and click **Download Latest**.
- Click **Save File** when prompted.

Step 2



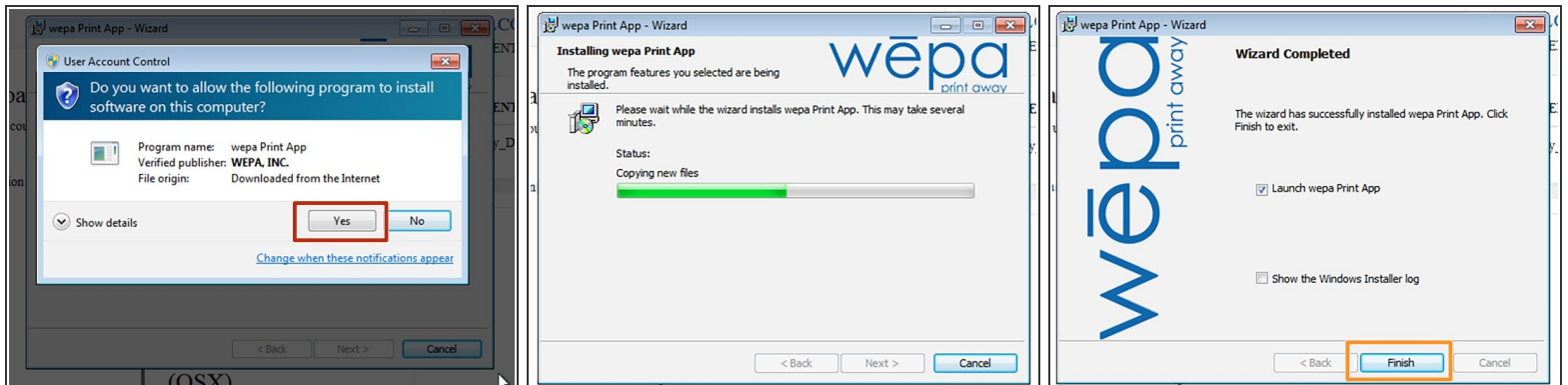
- Launch the installer once it finishes downloading.
- Click **OK**.
- Click **Run**.

Step 3



- Click **Next**.
- Read and accept the license agreement. Then click **Next**.
- Click **Install**.

Step 4



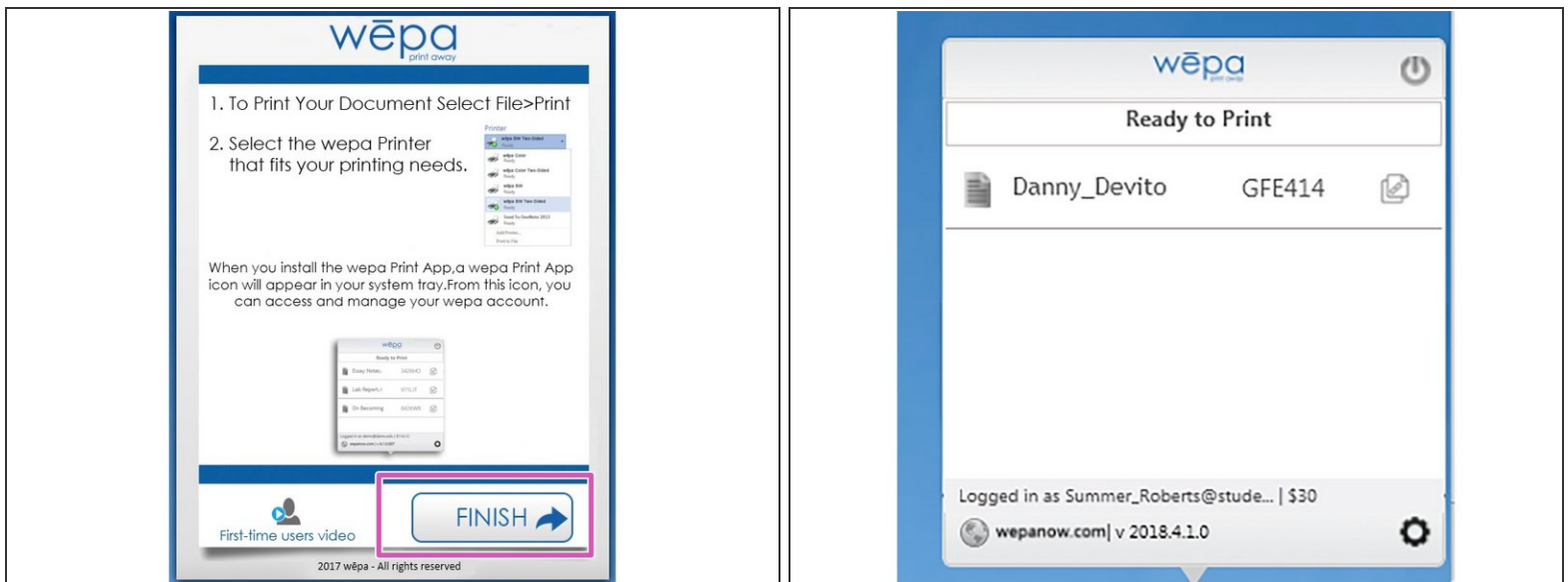
- Click **Yes** to start the install.
- The installation only takes a few minutes.
- When the installer finishes, click **Finish**.

Step 5



- Select **This is my personal computer**, click **Next**.
- Search Laboure and click **Next**.
- Log into your account using the following format: Username:
 FirstName_Lastname@students.laboure.edu followed by your Labouré password.

Step 6



- Click **Finish**.
- You will be able to print to the wēpa system and access your documents in the system tray.