



Install Microsoft Office for Windows

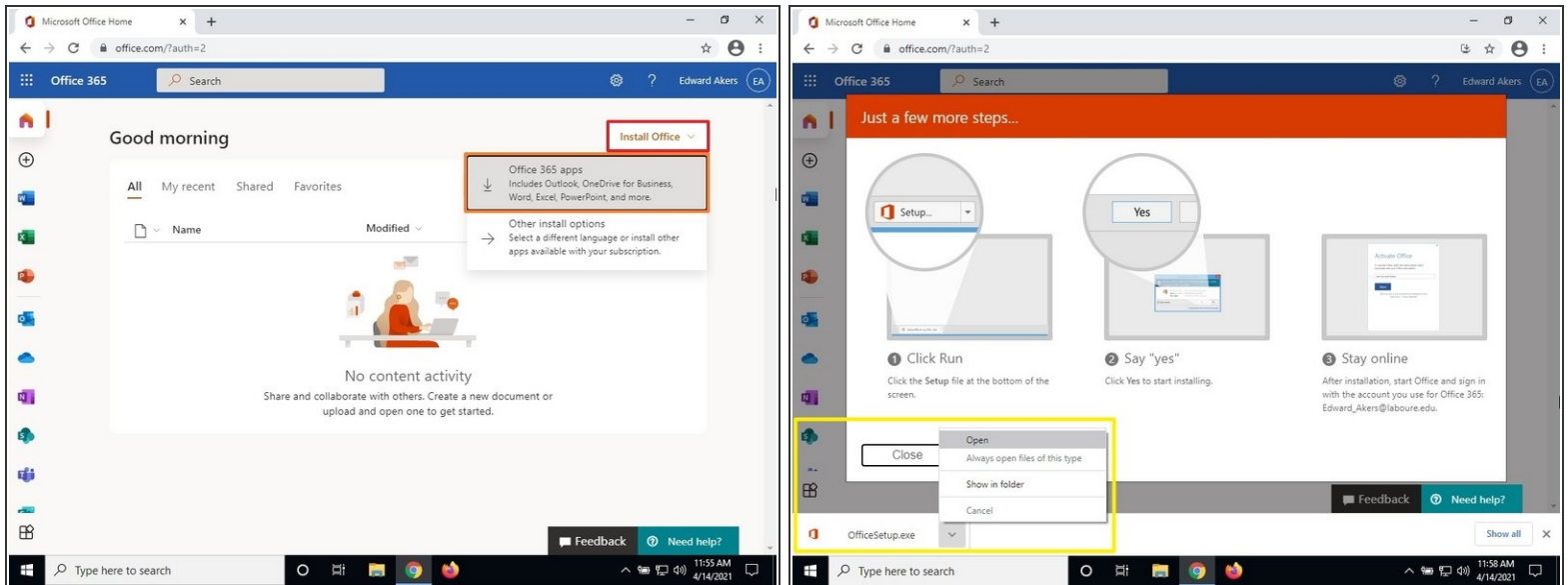
The guide will walk you through installing Microsoft Office on your PC using your Office365 license.

Written By: Wayne Peterson



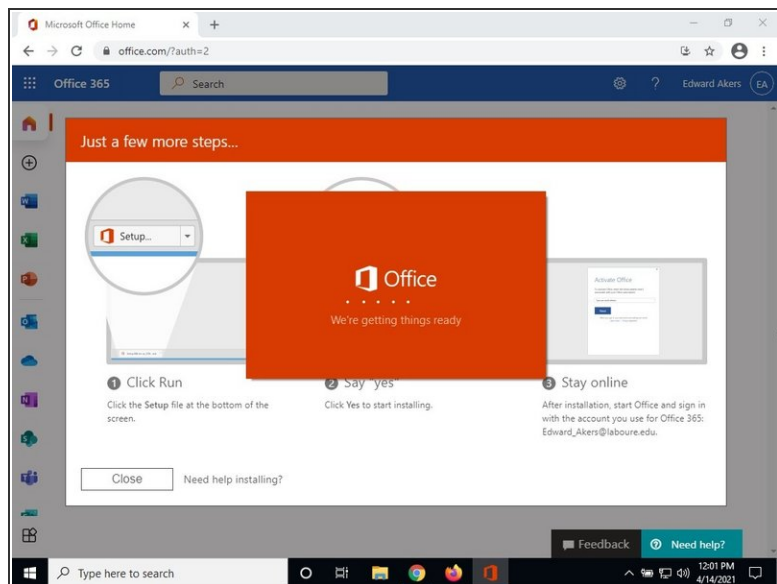
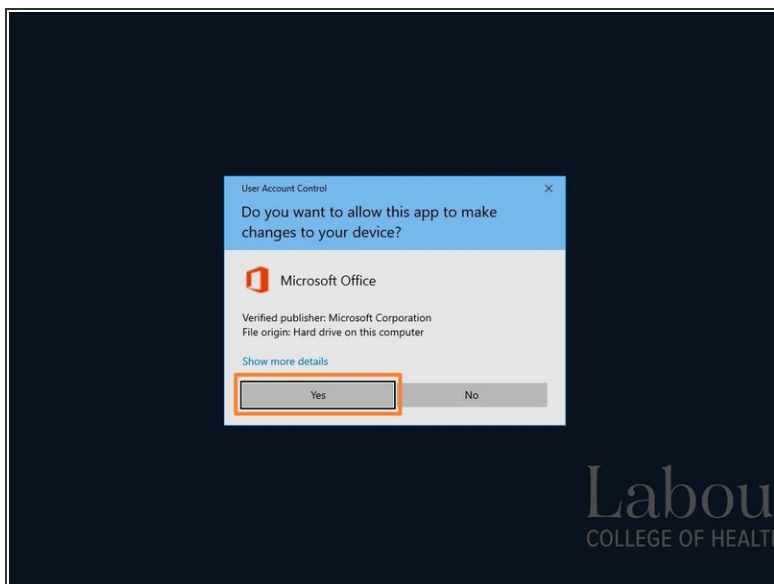
Install Office for Windows

Step 1 — Install Microsoft Office for Windows



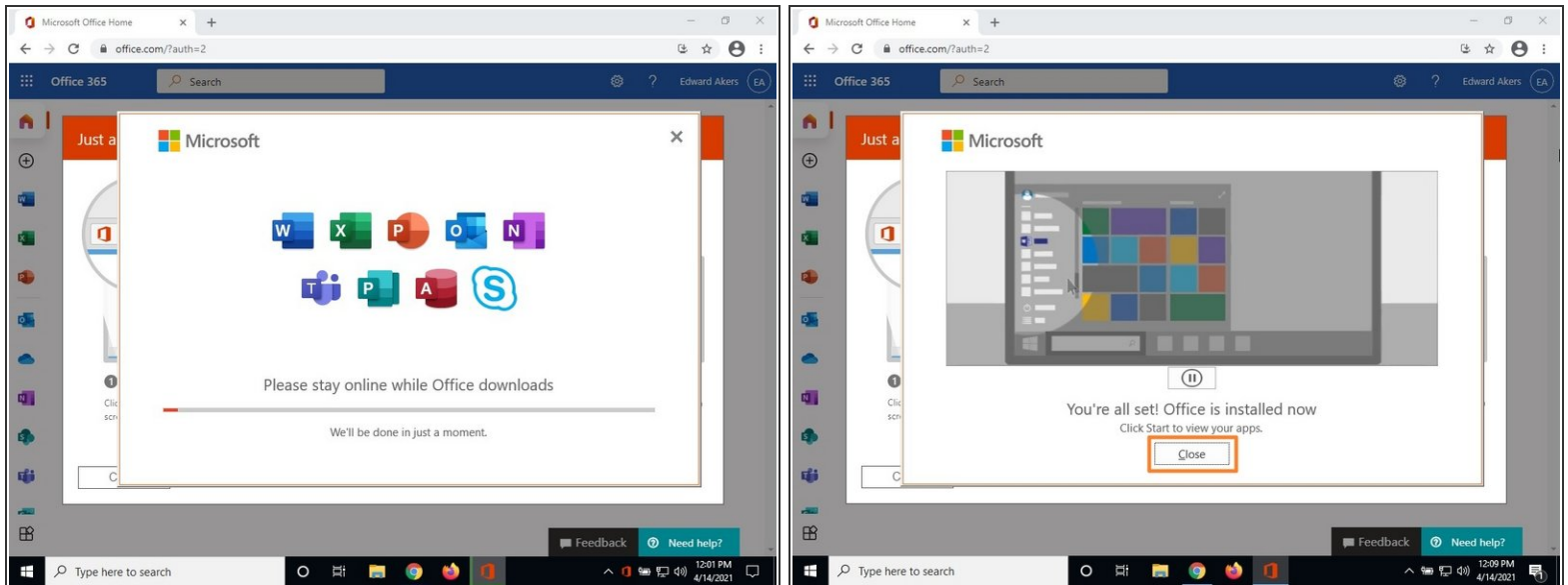
- On the Office365 Dashboard, select **Install Office**.
- Select **Office 365 apps**.
- When the download finishes, click the installer to launch.

Step 2



- Click **Yes** to allow Microsoft Office to install.
- Microsoft Office will then start installing.

Step 3



- The installer will take a few minutes to complete.
- When the installer has completed, click **Close** to exit the installer.
- Office is now installed on your computer. You can launch the apps from the **Start Menu**.
- ❗ You may be prompted to sign into your Labouré account the first time you open an Office product. Simply sign in with your full Labouré email address and password to license the software.