



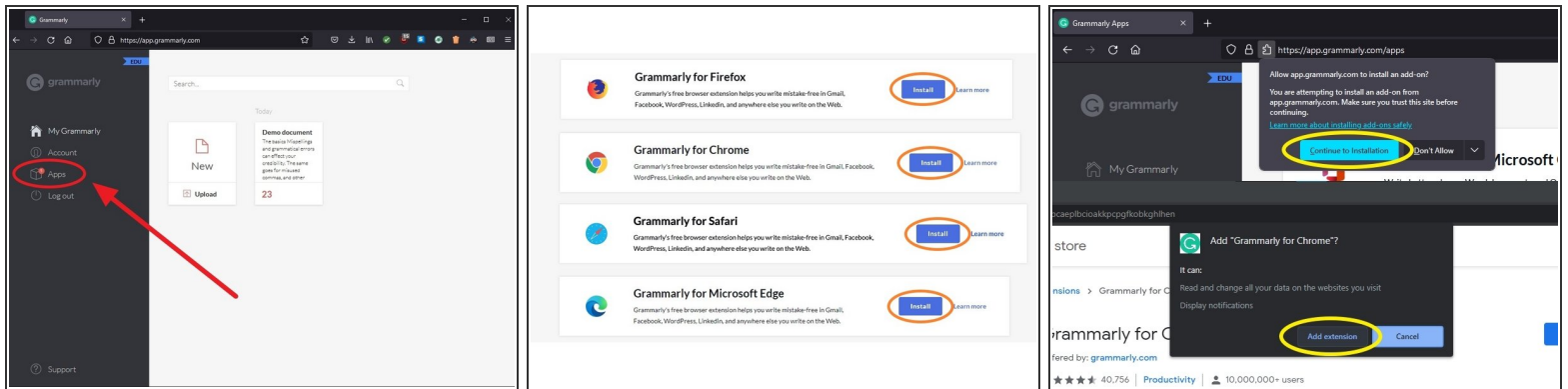
Install and Use the Grammarly Browser Extension

How to install and use the Grammarly browser extension.

Written By: Edward Akers

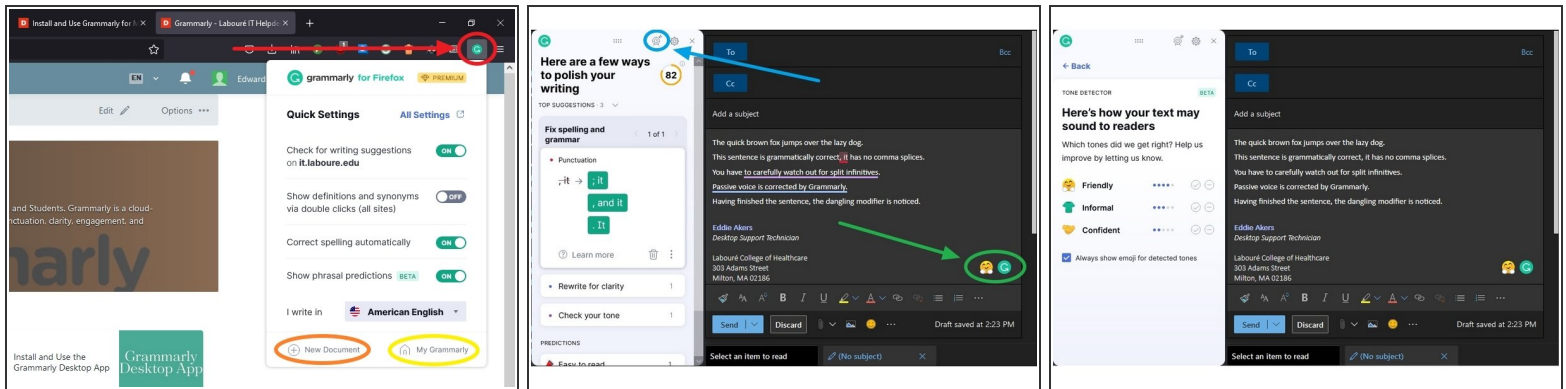
Grammarly
Browser
Extension

Step 1 — Installing the Extension



- [Sign into Grammarly.com with your Labouré student email](https://app.grammarly.com)
- From the My Grammarly dashboard, click **Apps**
- Next to **Grammarly for Firefox/Chrome/Safari/Microsoft Edge** (your browser will be automatically detected), click **Install**
- Allow the extension to install when prompted

Step 2 — Editing with the Grammarly Extension



- By default, the Grammarly extension will now appear alongside all other extensions at the right end of the toolbar. Click the icon to change the extension's settings. From here you can also:
 - Start a **New Document** in Grammarly's web editor
 - Go to the **My Grammarly** dashboard
- You may notice the Grammarly logo while typing in different places on the web. Clicking it will open editing suggestions. Clicking the emoji next to it will open the **Tone Detector** which uses machine learning to identify the tone that your writing conveys. You can use it to nail down how you want your writing to sound to readers.
 - From here you can also set your goals by clicking the bullseye icon.