



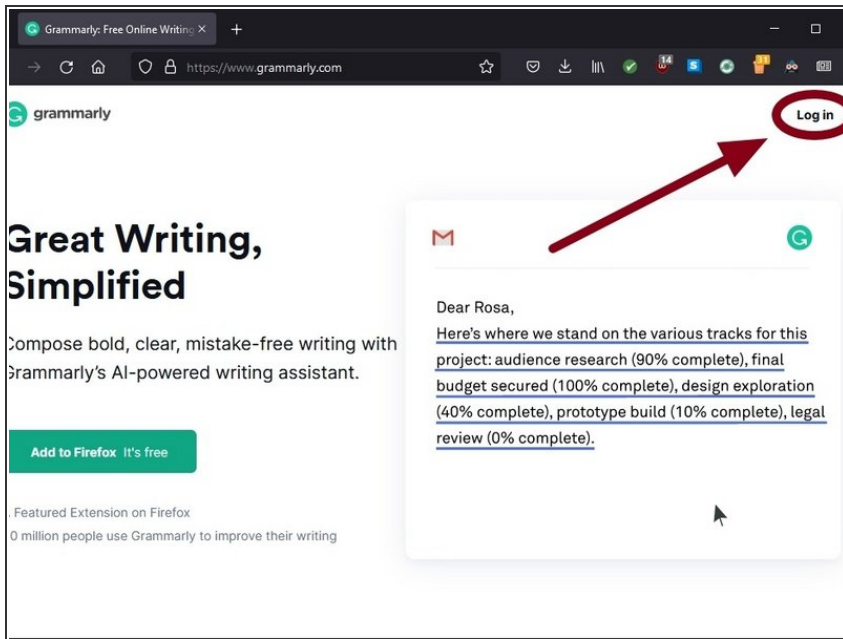
Access Your Labouré Grammarly Account

How to access your licensed Labouré Grammarly account.

Written By: Edward Akers

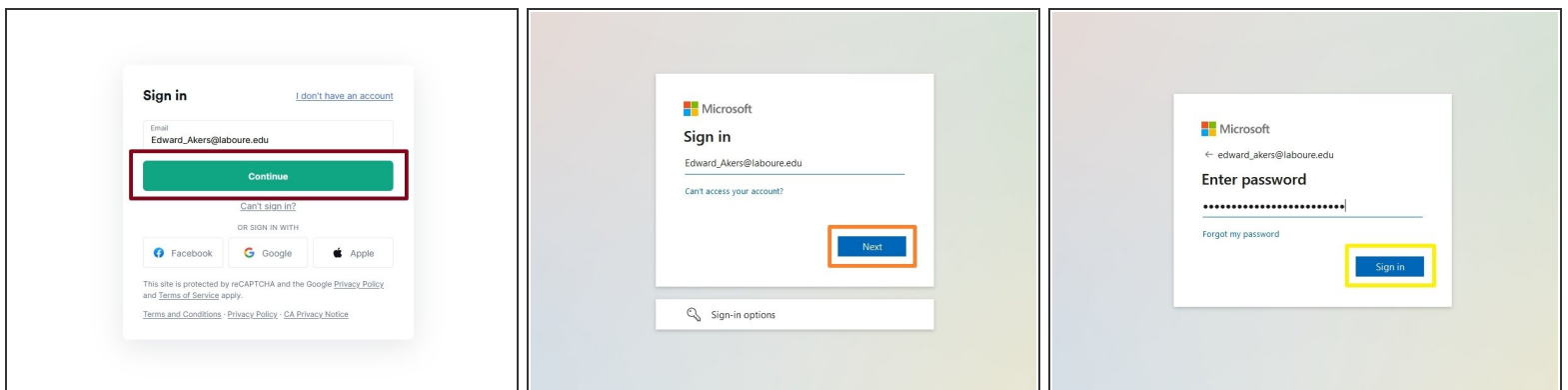
Access Your
Grammarly
Account

Step 1 — Grammarly.com



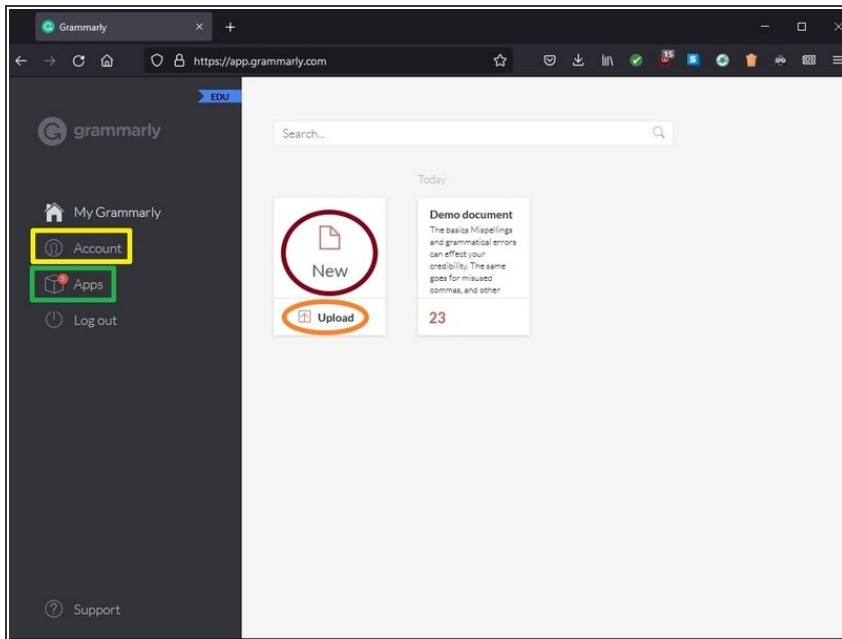
- In your web browser of choice, navigate to [Grammarly.com](https://www.grammarly.com)
- In the top right corner of the page, click **Log in**

Step 2 — Sign In



- Enter your Labouré email address and click **Continue**
- On the Microsoft sign-in page, enter your Labouré email address again and click **Next**
- Enter your Labouré email password and click **Sign in**

Step 3 — Signed In



- Once successfully signed in, you will be taken to the My Grammarly dashboard. From here you can:
 - Begin writing a new document (**New**)
 - Upload an existing document for editing (**Upload**)
 - Manage your account settings (**Account**)
 - Download Grammarly for desktop, browsers, and Microsoft Office as well as the Grammarly smartphone keyboard (**Apps**)